



📍 34 Withers Ground, Devizes, Wiltshire, SN10 2GW

🏠 Guide Price £599,950

A stunning 5 double bedroom family home with an immaculate interior and a landscaped rear garden, overlooking the Kennet and Avon Canal to the front.

- Superly Presented Family Home
- 5 Double Bedrooms
- Stylish En Suite + Family Bathroom & Shower Room
- Beautiful Vaulted Kitchen/Dining Room
- 2 Reception Rooms
- Detached Double Garage
- Parking For 3 Cars + EV Car Charger
- Catchment For Bishops Cannings School
- Overlooks The K&A Canal to the Front

🏡 Freehold

🏠 EPC Rating B



A highly impressive detached five double bedroom family home situated in a great location overlooking the canal, with a double garage, ample parking and a private well maintained rear garden. An early viewing is strongly recommended to appreciate the spacious and immaculately presented interior.

Inside, a welcoming hallway with downstairs cloakroom, has doors opening in to a 23ft dual aspect sitting room with a bay window to the front and double doors through to the garden. A further bay fronted study has a pleasant leafy outlook to the front. The superb light and airy kitchen/dining room has a vaulted ceiling with twin Velux skylights and painted wood effect flooring. The well equipped kitchen has quartz worktops, and a range of integrated appliances including a fridge and freezer, dishwasher, a double oven, and 5 ring gas hob. Set off the kitchen is a useful utility room which houses the gas boiler and has an outside door to the parking. On the first floor there are 3 beautifully presented bedrooms, with the principal bedroom enjoying a dressing area with mirror fronted wardrobes and a stylish en suite with a double width shower. The family bathroom is also on this level which has a bath with a shower over. On the second floor there are two further double bedrooms and a shower room, with the dual aspect bedroom 2 benefitting from fitted cupboards.

Outside, the north west facing landscaped rear garden enjoys a good amount of privacy. There is a beautiful extended sandstone patio seating area leading down to a decked sun terrace, and a lawn bordered by mature shrubs. The double garage has light and power. The driveway provides off road parking for up to 2-3 cars with the bonus of an EV charging point.

Situation

The property is set in an enviable position tucked down a driveway leading to just 3 homes that all front on to the Kennet and Avon Canal. Withers ground is located on the edge of Devizes with easy access to Marlborough and Swindon. The property falls under the catchment for the very popular primary school of Bishops Cannings which makes this an ideal area for young families, with countryside and the aforementioned canal right on the doorstep.

The historic market town of Devizes has many amenities including town centre shopping, a leisure centre, schools for all ages, various supermarkets, a variety of shops, cinema, theatre and thriving weekly market. The historic Kennet & Avon Canal runs through the town providing fishing and walking facilities. The major centres of Bath, Salisbury, Swindon, Marlborough and Chippenham are all within a 30 mile radius.

Property Information

Council Tax: F

Services: All mains services

Agents note: There is small annual management charge of £262.41 to Pinnacle PM.



Withers Ground, Devizes, SN10

Approximate Area = 1789 sq ft / 166.2 sq m

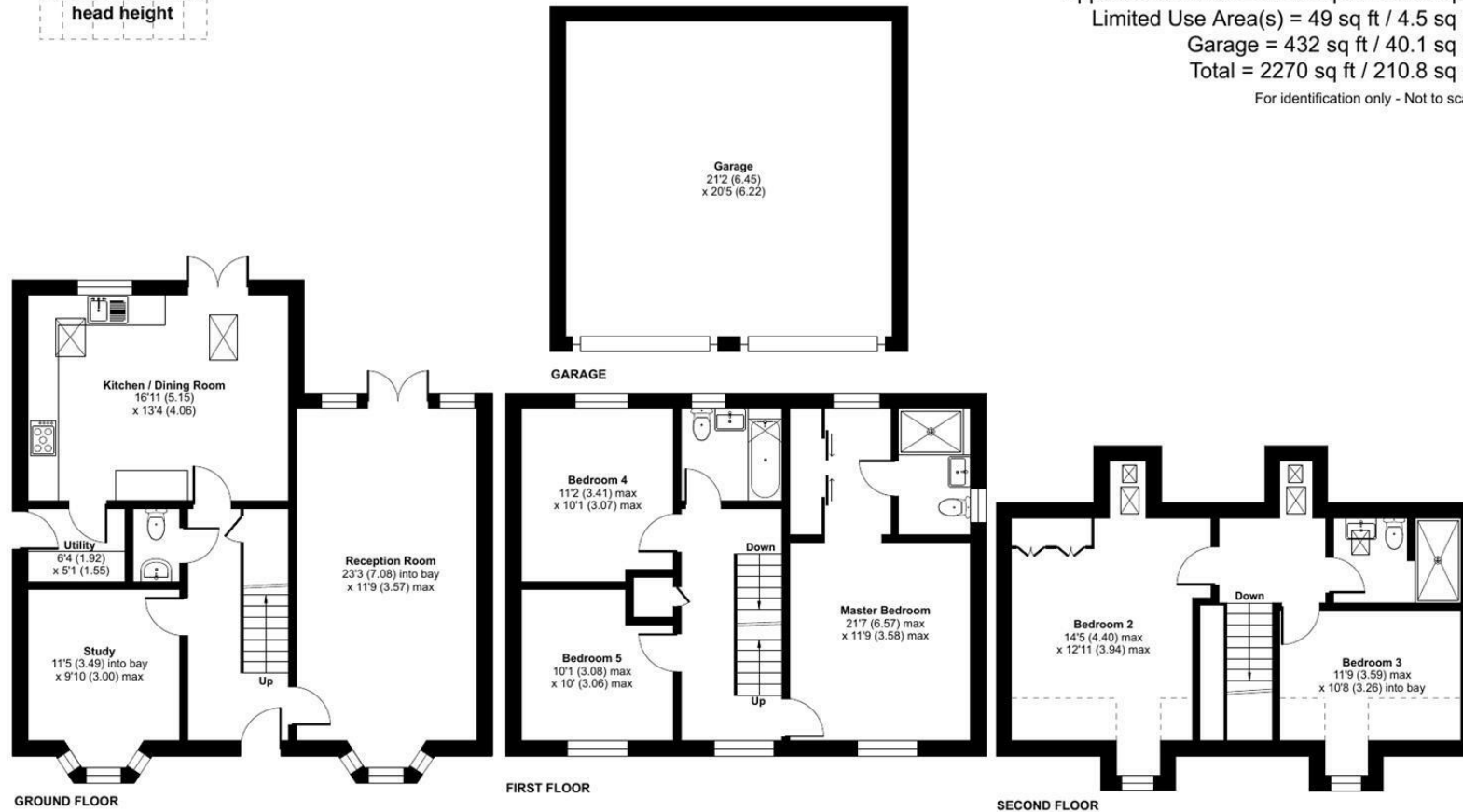
Limited Use Area(s) = 49 sq ft / 4.5 sq m

Garage = 432 sq ft / 40.1 sq m

Total = 2270 sq ft / 210.8 sq m

For identification only - Not to scale

Denotes restricted
head height



Floor plan produced in accordance with RICS Property Measurement 2nd Edition, Incorporating International Property Measurement Standards (IPMS2 Residential). © nitchecom 2025. Produced for Strakers. REF: 1374741

Disclaimer These particulars, whilst believed to be accurate are set out as a general outline only for guidance and do not constitute any part of an offer or contract. Intending purchasers should not rely on them as statements of representation of fact, but must satisfy themselves by inspection or otherwise as to their accuracy. No person in this firm's employment has the authority to make or give any representation or warranty in respect of the property. All measurements and distances are approximate only. Your home is at risk if you do not keep up repayments on a mortgage or other loan secured on it.